

Breathable Air Systems

Walker Filtration Breathable Air Systems | BA3022 to BA3031

Flow rates 15 SCFM (25 Nm³/h) to 30 SCFM (50 Nm³/h)

Due to the increasing demand for improved environmental and safety control, Walker Filtration has compiled a comprehensive range of wall mounted and portable breathable air systems.

Designed to suit 2 and 4 port breathable air installations, these purification packages offer exceptional dirt holding capacity and can be installed where safe, breathable compressed air is required.

The filter packages offer filtration and oil removal efficiencies down to 0.01 micron particulate size and maximum oil carryover efficiencies to 0.003 ppm (0.003 mg/m³) offering the operator clean, particulate and liquid oil free air with the added benefit of taste and odor removal for improved user comfort and performance.



Modular Construction
New filter head design enables easy close coupling assembly

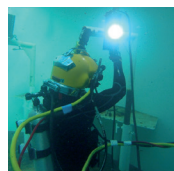


Two-Stage Filtration
DXA and DAC elements for double the filtration performance



Flexible Installation
Wall or Frame Mounted options available

Applications and Industries



■ Diving
■ Welding



■ Shotblasting
■ Spray Painting



■ Mining
■ Tunnelling



■ Tank Cleaning
■ Asbestos Removal

For further information please visit www.walkerfiltration.com

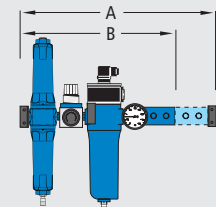
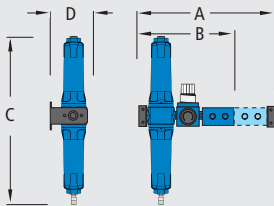


For further information please call: **+1 814 836 2900**

Technical Specification

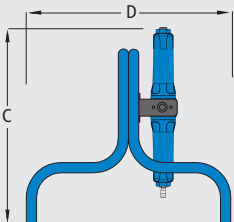
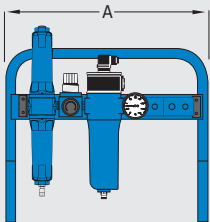
Model	Pipe size inches	Inlet flow rate*		Dimensions inches (mm)				Weight		No. of outlets	Element model
		SCFM	Nm³/h	A	B	C	D	lbs	kg		
BA3022W	1/4	15	25	9.96 (253)	9.29 (236)	16.85 (428)	2.95 (75)	10.1	4.6	2 at 3/8"	E30408DXA/E30408DAC
BA3022WH	1/4	15	25	15.51 (394)	14.84 (377)	16.85 (428)	3.90 (99)	10.1	4.6	2 at 3/8"	E30408DXA/E30408DAC
BA3022F	1/4	15	25	19.49 (495)	N/A	19.96 (507)	20.32 (516)	10.1	4.6	2 at 3/8"	E30408DXA/E30408DAC
BA3022FH	1/4	15	25	19.49 (495)	N/A	19.96 (507)	20.32 (516)	10.1	4.6	2 at 3/8"	E30408DXA/E30408DAC
BA3031W	3/8	30	50	13.11 (333)	12.44 (316)	16.85 (428)	2.95 (75)	14.6	6.6	4 at 3/8"	E30408DXA/E30408DAC
BA3031WH	3/8	30	50	18.66 (474)	17.99 (457)	16.85 (428)	3.90 (99)	14.6	6.6	4 at 3/8"	E30408DXA/E30408DAC
BA3031F	3/8	30	50	19.49 (495)	N/A	19.96 (507)	20.32 (516)	14.6	6.6	4 at 3/8"	E30408DXA/E30408DAC
BA3031FH	3/8	30	50	19.49 (495)	N/A	19.96 (507)	20.32 (516)	14.6	6.6	4 at 3/8"	E30408DXA/E30408DAC

* Rated flow at 100 psig (7 barg), reference conditions at 14.7 psi(a) (1.014 bar(a)), 68°F (20°C)



wall mountable option

BA3022W / BA3022WH (2 ports)
BA3031W / BA3031WH (4 ports)



floor standing option

BA3022F / BA3022FH (2 ports)
BA3031F / BA3031FH (4 ports)

Model	Accessory description
BAF1	Stand alone frame assembly suitable for NPT 1/4 to NPT 3/8 filter assemblies
WKN40178	Air pressure regulator and pressure gauge
LPA1	Audible alarm for low inlet air pressure condition
WKN40180	Manifold two port version
WKN40179	Manifold four port version

Specification	DXA	DAC
Particle removal	0.01 micron	
Maximum oil carryover at 68°F (20°C)	0.003 ppm	0.003 mg/m³
Maximum temperature	122°F **	50°C **
Maximum working pressure	145 psig	10 barg

** Recommended operating temperature 77°F (25°C)

Ordering Information

- BA3022W or BA3031W: wall mounting option with Duplex Filter.
- BA3022WH or BA3031WH: wall mounting option with Duplex Filter and compressed air heater.
- BA3022F or BA3031F: Duplex Filter mounted onto a portable frame.
- BA3022FH or BA3031FH: Duplex Filter and compressed air heater mounted onto a portable frame.

Technical Notes

- Additional filtration including a Water Separator is required.
- Duplex filters offer 2 stage filtration within one filter unit. Each filtration package provides an DXA (0.01 micron) grade element in the lower section for oil removal, while the DAC grade element in the upper section is for odor removal.
- Direction of air flow is inside to out through DXA (0.01 micron) grade filter element and outside to in through Activated Carbon DAC grade filter element.
- Breathable air filters include float operated drains as standard. ADVS16 on Duplex Filters and SDV25 on heaters.
- Self relieving air pressure regulators are used with 0 to 232 psig (0 to 16 barg) Pressure Gauges and can control the outlet air pressure between 29 and 145 psig (2 and 10 barg).

CRN

