



Vacuum Pump Exhaust Filters

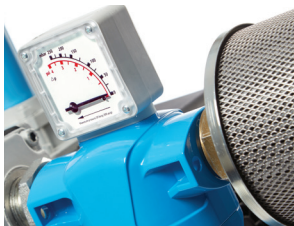
Models | A3031EF to A3303EF

Flow Rates 4 SCFM (7 Nm³/hr) to 288 SCFM (489 Nm³/hr)

Walker Filtration's New Alpha Simplex and Duplex Vacuum Pump Exhaust Filters are designed to remove oil mist from lubricated Vacuum Pumps – providing unrivalled filtration performance, reduced exhaust noise levels and an oil free working environment.

The New Alpha Vacuum Pump Exhaust Filters feature a comprehensive range with connection sizes ranging from 3/8" to 3". High performing Simplex Filters deliver exceptional results in oil mist removal from vacuum pumps, whilst the two-stage Duplex Filter removes both oil mist and odour.

The New Alpha elements utilise custom engineered media technology to provide market leading performance, significantly reducing pressure loss and energy consumption for low operational costs and increased operating efficiencies.



Effective Oil Mist Removal

Preventing potentially harmful contaminants being exhausted into the atmosphere



Optimised Filtration Performance

New Alpha custom engineered media technology delivers a step change in performance



Duplex Filtration

Two-stage filtration within one filter unit

- **Exceptional Drainage** Manual drain fitted to all Vacuum Pump Protection Filters as standard
- **Market Leading Performance** Custom filter construction delivers optimum performance
- **Simplified Serviceability** New profiled bowl design and unique push fit elements ensure quick and reliable maintenance
- **Product Safety in Mind** Guaranteed safe housing closure with rotational safety stop
- **Corrosion Protection** Internal and external electrophoretic paint finish followed by a tough exterior polyester powder coating

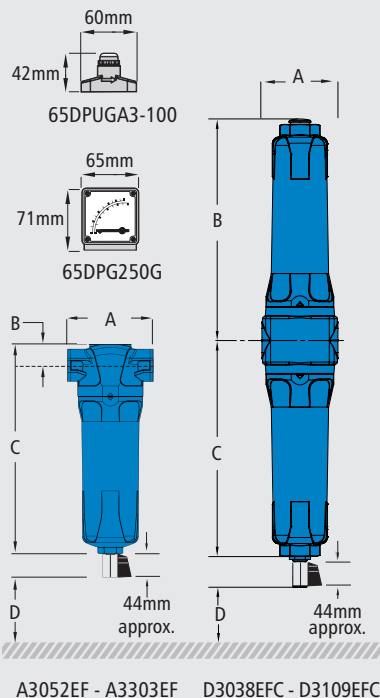


Technical Specification

Filter model	Pipe size inches	Exhaust flow rate (vacuum displacement)		Dimensions mm				Weight Kg	Element model
		Nm ³ /hr	SCFM	A	B	C	D		
A3031EF	3/8	7	4	70	24	231	70	0.6	E30408EF
A3051EF	1/2	11	7	70	24	231	70	0.6	E30412EF
A3052EF	1/2	20	12	127	32	285	80	1.7	E30612EF
A3071EF	3/4	25	15	127	32	285	80	1.7	E30612EF
A3101EF	1	29	17	127	32	285	80	1.7	E30612EF
A3072EF	3/4	35	21	127	32	371	80	2	E30621EF
A3102EF	1	50	29	127	32	371	80	2	E30621EF
A3122EF	1 1/4	75	44	170	53	508	100	4.9	E30831EF
A3151EF	1 1/2	100	59	170	53	508	100	4.9	E30831EF
A3201EF	2	115	68	170	53	508	100	4.9	E30831EF
A3202EF	2	180	106	170	53	708	100	5.5	E30850EF
A3251EF	2 1/2	200	118	220	70	736	100	10.5	E31140EF
A3301EF	3	234	138	220	70	736	100	10.5	E31140EF
A3302EF	3	360	212	220	70	857	100	11.5	E31160EF
A3303EF	3	489	288	220	70	1005	100	12.5	E31175EF

Filter model	Pipe size inches	Exhaust flow rate (vacuum displacement)		Dimensions mm				Weight Kg	Element model Exhaust Filter	Element model Activated Carbon	No. of Elements
		Nm ³ /hr	SCFM	A	B	C	D				
D3038EFC	3/8	7	4	70	199	204	70	1	E30408DEF / E30408DAC		1/1
D3058EFC	1/2	11	7	70	199	204	70	1.1	E30412DEF / E30412DAC		1/1
D3059EFC	1/2	20	12	100	236	240	80	2.3	E30613DEF / E30613DAC		1/1
D3078EFC	3/4	25	15	100	236	240	80	2.3	E30613DEF / E30613DAC		1/1
D3079EFC	3/4	35	21	100	356	360	80	3.1	E30625DEF / E30625DAC		1/1
D3109EFC	1	50	29	100	356	360	80	3.2	E30625DEF / E30625DAC		1/1

Rated flow at atmospheric pressure, 1 bar (a) and 20°C



Grade	EF		DAC	
Particle removal	0.1 micron		0.1 micron	
Maximum oil carryover at 20°C (68°F)	1 mg/m ³		0.003 mg/m ³	
Pressure loss - clean & dry	25 mbar	0.36 psi	30 mbar	0.44 psi
Pressure loss - saturated	70 mbar	1 psi	75 mbar	1.1 psi
Pressure loss - element change	12 mths	8000 hrs	at least every 6 months	
Maximum temperature	120°C	248°F	50°C **	122°F **
Maximum working pressure	20.7 barg	300 psig	20.7 barg	300 psig
Element end cap colour	Black		Black	

Technical notes

- Duplex filters provide a DEF grade element in the lower section for oil removal and a DAC grade element in the upper section for odour removal. Direction of air flow is inside to out through EF grade and outside to in through AC grade filter element.
- Pop up indicators (65DPUGA3-100) are fitted to models A3031 to A3051. Differential pressure gauges (65DPG250G) are fitted to models A3052 to A3303 as standard.
- Manual drain valves (MDV25 on models A3031EF to A3051EF, D3038EFC to D3109EFC and MDVE25 on models A3052EF to A3303EF) are fitted as standard.
- Drain flasks are available for liquid collection, for use at atmospheric pressure or vacuum only - see price guide.
- New Alpha Filters are manufactured from cast aluminium alloy and are PED 2014/68/EU compliant for group 2 gases.
- Activated Carbon Filters must not operate in oil saturated conditions and will not remove certain types of gases including carbon monoxide (CO) and carbon dioxide (CO₂).
- Threaded connections are Rp (BSP Parallel) to ISO 7-1 or NPT to ANSI/ASME B1.20.1 if supplied within North America. Rc (BSP Taper) to ISO 7-1 also available.
- For NPT threads, add the suffix N, e.g., A3052NEF, and for Rc threads add the suffix C, e.g. A3052CEF.
- Filter elements should be changed every 12 months / 8000 hours (whichever comes first). Activated Carbon Filter elements should be changed at least every 6 months.

