

PRO XF Water Separators

Redefining Compressed Air Filtration | Water Separators

Flow rates 700 scfm (1189 Nm³/hr) to 1500 scfm (2549 Nm³/hr)

The PRO XF Water Separator uses centrifugal force to remove 99% of bulk water found in compressed air systems to avert water contamination. PRO XF Water Separators enhance the reliability of a compressed air system, eliminate the problem of costly downtime and are tested in accordance with ISO 8573-9.

Designed as part of the PRO XF range, the PRO XF Water Separator can be used individually or multi-banked with PRO XF Filter Modules to create a space-saving and cost effective filtration solution.

The centrifugal module has been custom engineered to feature unique vanes to eliminate points of low efficiency, and a vortex arrestor to stop re-entrainment - ensuring minimal operating pressure loss and maintaining excellent liquid removal, even at low velocities.

Available in 2", 2 1/2" and 3" threaded and DN80 and DN100 flanged housings, for operating pressures up to 16 barg. No replacement components are required for the PRO XF Water Separator, making it a viable, cost effective solution to removing bulk water from compressed air.

Removes **99%**
of bulk water
when tested in
accordance with
ISO 8573-9



Unique Centrifugal Module

Removes 99% of bulk water even at low velocities



Externally Accessible Drain valve

Eliminates the need to access inside the filter housing when servicing the drain



Threaded & Flanged Connections

2", 2 1/2", 3" threaded and DN80 and DN100 flanged housings

- **Energy Saving** Operates with consistently low differential pressure, reducing both energy consumption and operating costs
- **Cost Effective** No replacements components are required
- **Space Saving Modular Construction** The PRO XF Water Separator can be installed individually or banked to PRO XF Filter Modules using slim line connectors and one set of inlet and outlet ports
- **Corrosion Protection** Internally and externally EP coated
- **Externally Accessible Drain Valve** Drain valve can be removed externally, without having to gain access to the internal of the filter. Simply unscrew from the bottom and remove

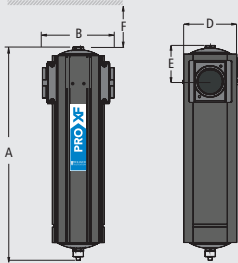
For further information please visit www.walkerfiltration.com



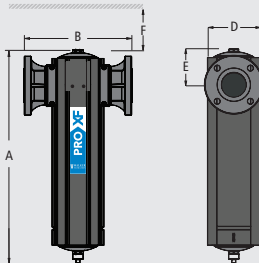


Technical Specification

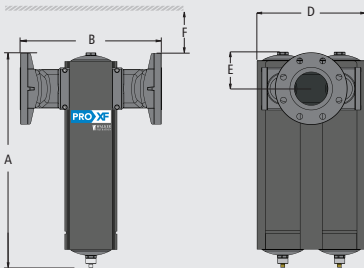
PRO XF Water Separator



Model XF200WS - XF300WS



Model XF300FWS



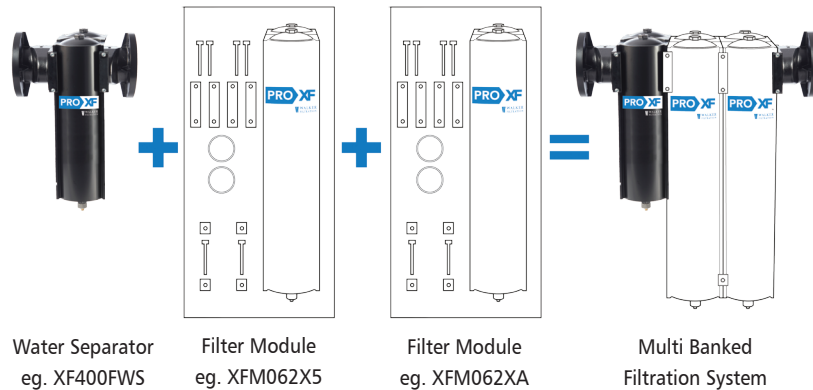
Model XF400FWS

Water Separator	Pipe Size	Inlet flow rate*		Dimensions mm						Weight Kg
		Nm ³ /hr	SCFM	A	B	C	D	E	F	
XF200WS	2"	1189	700	650	232	171	217	116	300	11.8
XF250WS	2 1/2"	1444	850	650	232	171	217	116	300	11.8
XF300WS	3"	2549	1500	650	232	171	217	116	300	11.8
XF300FWS	DN80 / 3"	2459	1500	650	352	171	217	116	300	15.7
XF400FWS	DN100 / 4"	5097	3000	650	457	343	N/A	116	300	29.3

Grade	WS	
Maximum recommended operating temperature	120°C	248°F
Minimum recommended operating temperature	1.5°C	35°F
Maximum working pressure	16 barg	232 psig

All PRO XF Water Separators can be multi-banked to PRO XF Filter Modules to create compact and space saving filtration solutions.

Example: Air Purity Classification 1,-,1



For more information on the full PRO XF range please see the PRO XF product brochure or visit www.walkerfiltrationlaunches.com/proxf

Technical notes

- Water Separators and Coalescing Filters are fitted with float operated automatic drain valves. When high quantities of liquids are anticipated, Walker Filtration recommends the use of electronic drain valves with Water Separators.
- Water Separators can be multi banked to appropriate PRO XF Filter Modules using the slim-line connectors that are supplied with each Filter Module.
- Flanged connections are DN80 PN16 (3") and DN100 PN16 flanged (4"), or ANSI B16.5 class 150 (3" and 300lb (4")). Filters supplied as standard, i.e. XF341F, will be supplied with DN type flanges. For 3" ANSI 150lb and 4" ANSI 300lb Flanges add the suffix 'P' to the part number e.g XF341FPXA.
- Threaded connections are Rp (BSP parallel) to ISO 7/1 or NPT to ANSI B2.1 if supplied within North America. For NPT connections add the suffix 'N' e.g. XF241NXA.



Walker Filtration Ltd
 Birtley Road, Washington,
 Tyne & Wear, NE38 9DA,
 United Kingdom.
 t: +44 (0) 191 417 7816
 f: +44 (0) 191 415 3748
 e: sales@walkerfiltration.co.uk
 www.walkerfiltration.com

Walker Filtration Inc
 4748 Pacific Avenue,
 Erie, PA 16506,
 USA.
 t: +1 814 836 2900
 f: +1 814 836 7921
 e: usa@walkerfiltration.com
 www.walkerfiltration.com

Walker Filtration PTY Ltd
 16-18 Lindon Court,
 Tullamarine, Victoria, 3043,
 Australia.
 t: +61 (0) 3 9330 4144
 f: +61 (0) 3 9330 4177
 e: sales@walkerfiltration.com.au
 www.walkerfiltration.com.au

Walker Filtration Ltd Japan
 Hulic Gaienmae Building, 6F
 2-7-26 KitaAoyama, Minatoku
 Tokyo, 107-0061, Japan.
 t: +81 (0)3 6890 6911
 f: +81 (0)3 6685 2974
 e: japan@walkerfiltration.com
 www.walkerfiltration.com